



EX-CELL

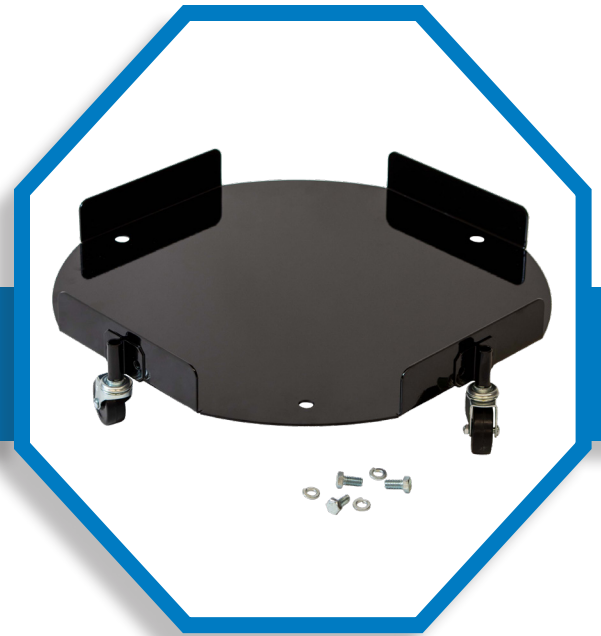
KAISER

DOLLY PAN FOR ARENA 51 SERIES

ARENA DOLLY

Heavy-duty, 12 gauge steel dolly powder-coated in Black Gloss (BLK).

Hardware included to ensure unit stays securely on dolly pan.



SPECIFICATIONS:

- Heavy-duty, 12 gauge, powder-coated steel dolly
- Solid pan perfectly holds any ARENA-51 receptacle
- Includes 4 swivel ball-bearing stem casters with 2" non-marring wheels
- Non-marring wheels mounted on outside of dolly for greater stability & a smooth, easy push
- Includes bolts for attaching to receptacle
- Contains over 30% recycled materials & is 100% post-consumer recyclable

BODY FINISH



Black Gloss
(BLK)



OVER 30%



ARENA DOLLY	
21.2"	Diameter
4.6"	Height
13	Weight (lbs)
Carton - 22" x 22" x 6"	

APPLICATIONS:

- For use with the Arena 51 Series

As a result of our commitment to continuous improvements, occasionally minor changes may be made to our products without advance notice. Such changes are minor and have no effect on the form, fit and function of a product but may result in a minor cosmetic difference. Ex-Cell Kaiser will never mix any products that may have modifications within a single order. Our website will always reflect the most current product image.